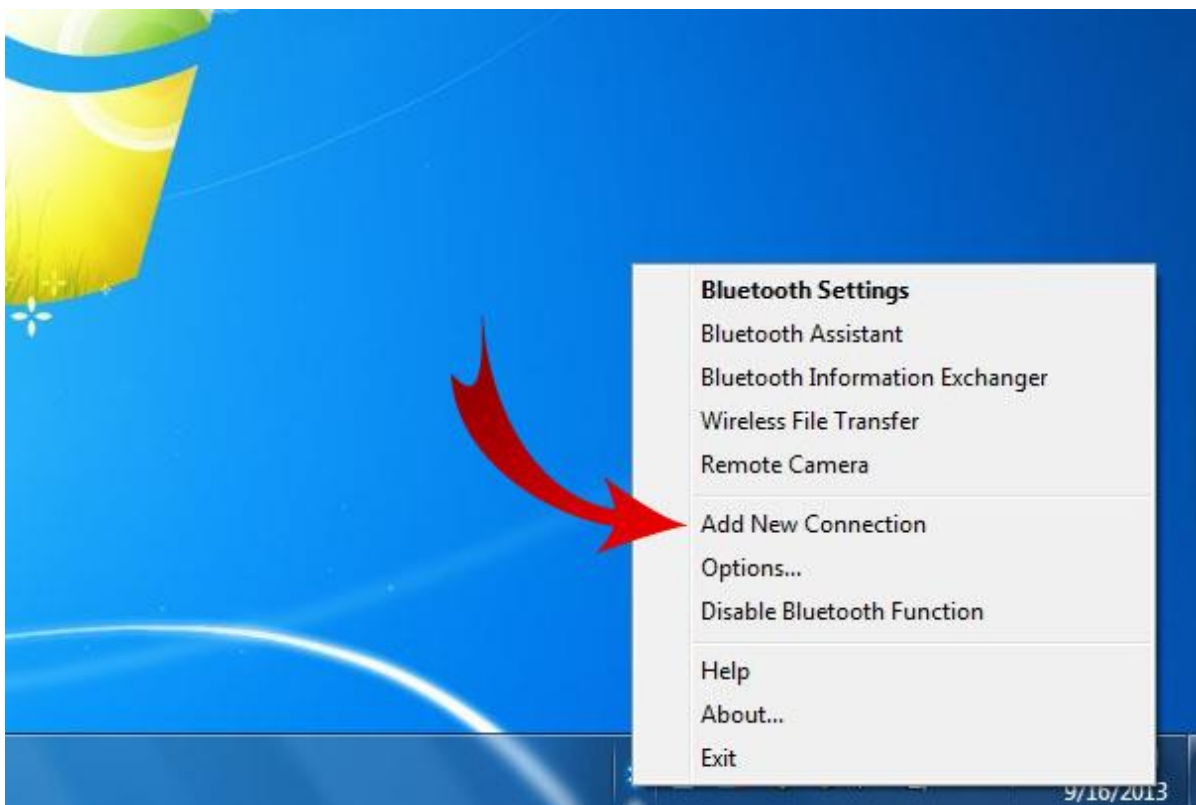


Directions for Pairing Smart Slate with your PC (Windows 7)



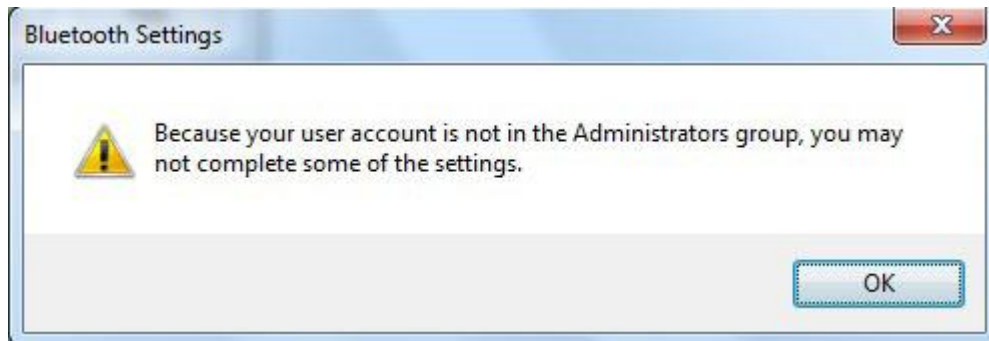
Right Click the Bluetooth Icon



Click Add New Connection



Click New Connection
(Highlight and delete any existing connection)



Click Ok



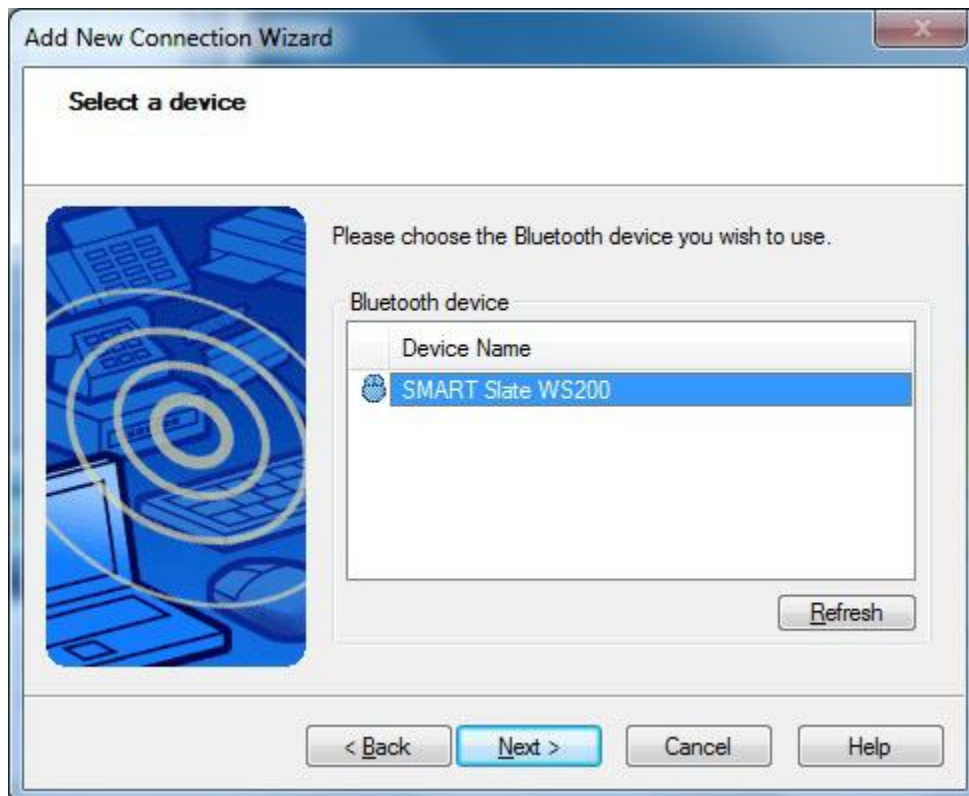
Make sure your slate is switched on



Then press and hold the Connect button on the back of the slate for 7 seconds



Click next leaving Express Mode selected
(Wait for a min or two as your slate is detected)



Click next and your slate should be synced to your machine now